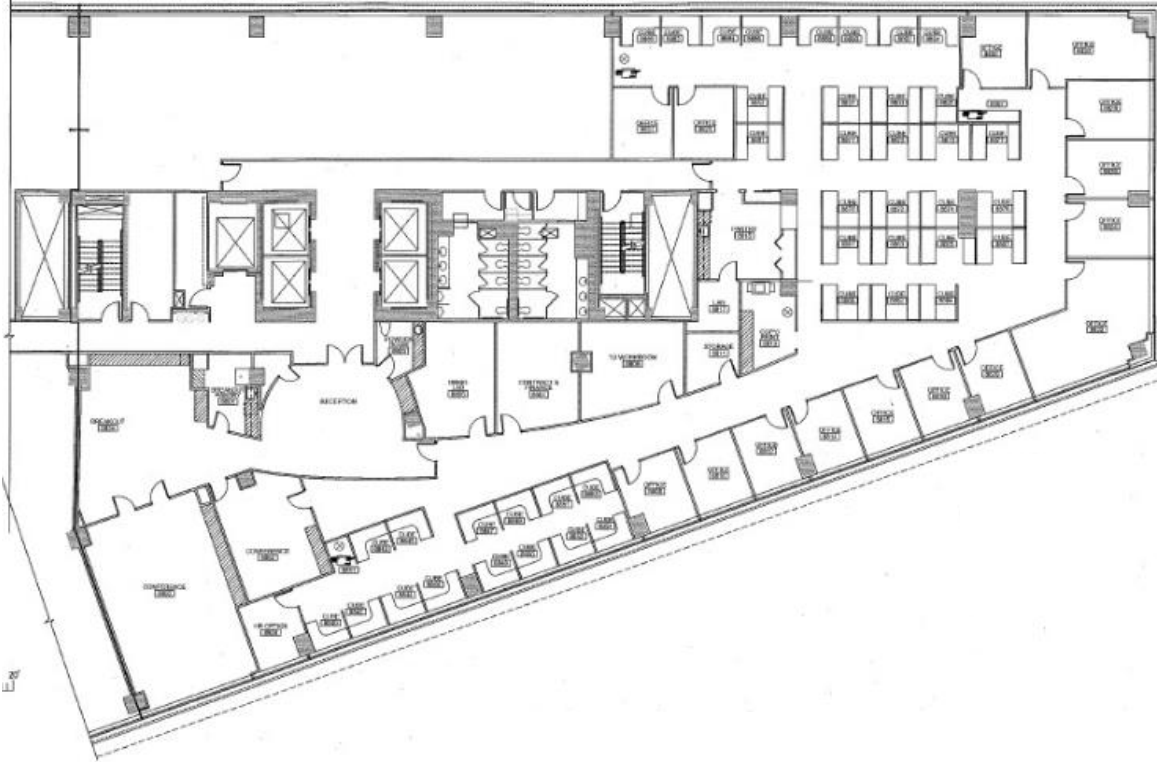


# 1201 MARYLAND AVENUE, SW

8TH LEVEL – 13,345 SF AS-BUILT PLAN



- **HIGH-END SUITE AVAILABLE 11/1/2020**
- **VIEWS OVERLOOKING 12<sup>TH</sup> STREET AND MARYLAND AVENUE**
- **NEWLY RENOVATED TENANT-ONLY FITNESS CENTER**
- **TWO BLOCKS TO THE WHARF AND ACROSS THE STREET TO MANDARIN ORIENTAL HOTEL**