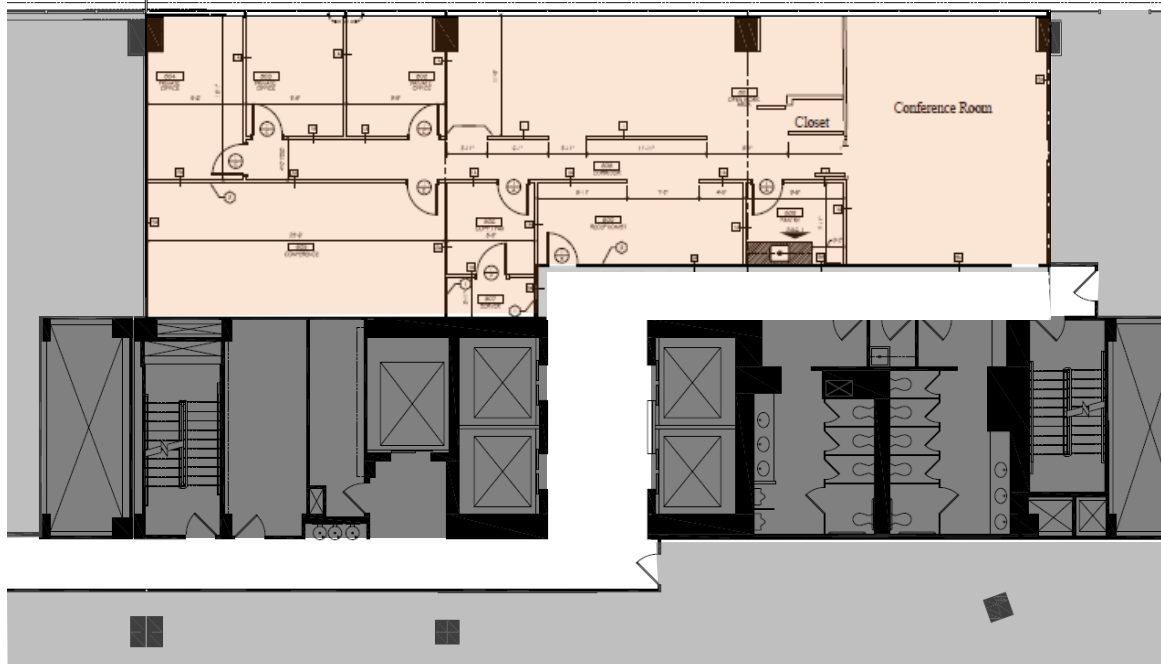


# 1201 MARYLAND AVENUE, SW

8TH LEVEL - 2,950 SPEC SUITE (AS-BUILT PLAN)



D STREET



**HIGH-END SPEC SUITE AVAILABLE IMMEDIATELY**

**VIEWS OF WASHINGTON MONUMENT OVERLOOKING D STREET**

**BUILT OUT WITH 3 OFFICES, 2 CONFERENCE ROOMS AND SPACE FOR 14 WORKSTATIONS**

